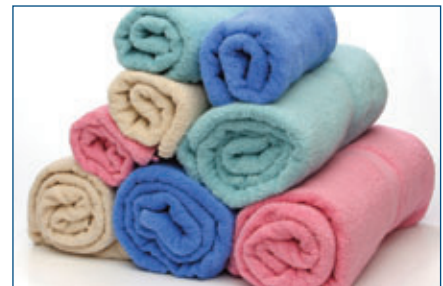
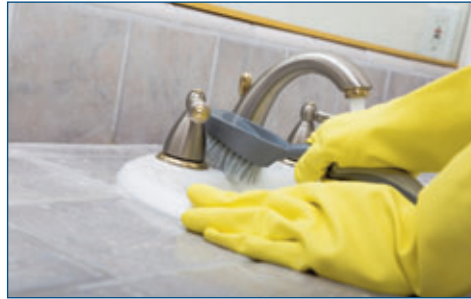
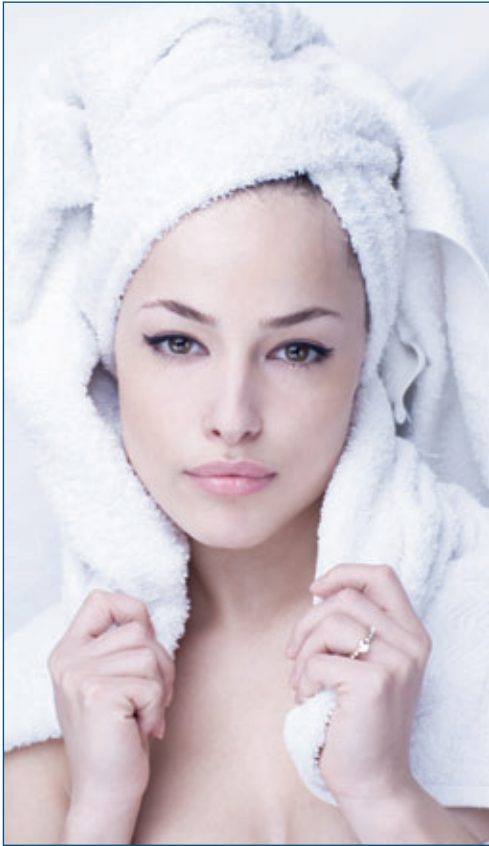


Cleaner, Smarter, Better ... Soft Water



The Trouble with Hard Water

Hard water (calcium & magnesium) is a common problem for many homeowners and businesses. When hardness minerals are combined with heat it forms troublesome scale. Scale causes costly build-up in your plumbing, water heater and other water using appliances. When combined with soap, the minerals form soap curd or scum that makes skin dry and itchy, hair lifeless, laundry dull and builds up on fixtures.



IWT 565 Water Softener

You Deserve the Many Benefits of Soft Water

- Silky shiny hair
- Soft supple skin
- Crystal clear dishes & glassware
- Bright whites, vibrant colours
- Easier cleaning
- Use up to 75% less soap
- Lower water heating cost by 29%
- Protect plumbing & appliances
- Extend life of laundry
- Save money



IWT 565 Series Water Softener



Features:

- Exclusive IWT electronic control valve with reliable piston, seal and spacer technology
- Cabinet or Twin Tank models
- Lifetime Guarantee on tanks; 7 years on valve
- Scrolling “No-touch” diagnostic LCD display showing time and date, capacity, volume remaining, regeneration time, last regeneration date, current flow rate & peak flow rate
- Meter Immediate, Meter Delayed, Meter with Day Override, Vacation and Calendar Clock mode
- Adjustable cycle times
- Tank jackets reduce condensation problems. Standard on 8", 9" and 10" models
- Brine safety valve provides extra overflow protection
- Plastic salt grid prevents salt bridging
- Unique bypass with an integrated space saving turbine meter and sample port on the inlet. One-piece design avoids meter jamming
- Time saving quick connect fittings on bypass and brine line. Powercord even has quick connect for easy valve spin on.
- Drain line o-ring eliminates need for Teflon
- NSF approved tanks / WQA approved resin

Item #	Model	System Capacity Grains			Flow Rate		Regeneration Water Usage (Gallons)		Mineral Tank Size	Resin Cu. Ft.	Brine Tank / Cabinet Size Inches	Salt Capacity (Lbs)	Ship Weight (Lbs)
		@ 10 lbs/cu ft	@ 6 lbs/cu ft (Factory Setting)	@ 3 lbs/cu ft	Service USGPM	Backwash USGPM	Clean Water (Factory Setting)	Problem Water					
15010007	IWT565-75	21,000	18,750	11,550	8.0	1.5	29.5	37.0	8 x 44	0.75	18.1 x 34.5	300	84
15010008	IWT565-100	28,000	25,000	15,400	10.0	2.0	38.0	48.0	9 x 48	1.00	18.1 x 34.5	300	104
15010009	IWT565-150	42,000	37,500	23,100	12.0	2.4	48.5	60.5	10 x 54	1.50	18.1 x 34.5	300	133
15010010	IWT565-200	56,000	50,000	30,800	15.0	3.5	80.5	95.5	12 x 52	2.00	20.3 x 37.4	400	153
15010024	IWT565-250	70,000	62,500	38,500	15.0	4.0	92.5	112.5	13 X 54	2.50	20.3 x 37.4	400	195
15010019	IWT565-300	84,000	75,000	46,200	15.0	5.0	116.5	141.5	14 x 65	3.00	20.3 x 37.4	400	220
15010011	IWT565-75C	21,000	18,750	11,550	8.0	2.0	29.5	37.0	9 x 35	0.75	16.5x19.3x43.3	300	84
15010012	IWT565-100C	28,000	25,000	15,400	10.0	2.4	38.0	48.0	10 x 35	1.00	16.5x19.3x43.3	300	104

- Voltage 12V/60Hz (120V to 12V wall mount transformer included)
- Pipe Size 3/4"
- Max Water Temp = 110°F (43°C)
- Max Operating Pressure = 100 PSIG (689 kPa)
- At stated service flow rates the pressure drop through these devices will not exceed 15 PSIG
- Do not use where microbiologically unsafe

Manufactured by:



A Division of
Canature NA
Regina, SK. Kitchener ON.
www.iwtwater.com

Your Local Water Professional: